



## Listen to your customers

Customers want good service. Give them clear directions who to contact and always let them leave a message. Access your messages frequently and respond quickly.

ITS Voice Mail / Automated Attendant systems let you **grow** your business by helping you **promote** your departments and improving your customer service:

- **Automated Attendant** with multilingual feature, directs callers with a range of pre-recorded instructions in your choice of up to three languages. Allows you to record multi-level personalized scripts.
- **Voice Mail** with up to 500 mailboxes, so your customers can always leave a message with the right person.
- **Unified Messaging** for the more sophisticated office, sends your messages to your PC via E-mail. Set up additional alerts to phone numbers, pagers and send as SMS notification to mobile phones.



**Voice Mail / Automated Attendant  
With Unified Messaging**

## Voice Mail Systems with Automated Attendants

Do you need to direct callers to the correct extension? Do your callers speak different languages? Do you need to follow up on missed calls? You can depend on ITS Voice Mail Solutions to meet these needs.

ITS Voice Mail systems are designed to effectively direct incoming call traffic to the best possible people in your organization, even if they are off-site. All systems are plug and play, letting you easily integrate them with most known PBXs and Key Telephone Systems (via In-Band DTMF/SMDI interfaces) around the world. Choose from our diverse range of models or upgrade our VME Pro to accommodate your growing service needs.

- **VME Pro**, our superior Unified Messaging and Voice Mail Solution, designed for medium to large sized businesses with between 40-300 employees: 500 Mailboxes, 4 or 8 ports. [Options: Unified Messaging, SMS Notification Unit >>>](#)
- **Vocal Pro**, for small-sized businesses with 15-50 employees: 48 Mailboxes, 2 ports, and Built-in Unified Messaging. [Options: SMS Notification Unit >>>](#)
- **Vocal**, for medium sized businesses with between 15-65 employees: 128 Mailboxes, 2 or 4 ports.
- **Vocal Jr.**, designed for small businesses with up to 25 employees, is our smallest Voice Mail solution: 48 Mailboxes, 2 ports.

Never miss a customer call with the ITS family of Flash Voice Mail and Automated Attendant solutions. All of our systems come standard with the latest cutting edge technology, such as Flash Memory and Digital Signal Processing (DSP).



### VME Pro

#### The Superior Voice Mail Solution

The VME Pro is our most advanced, solid state flash memory Voice Mail Solution, meeting the needs of medium to large sized businesses with up to 300 employees. Offered with a built-in modem and LCD displaying port status, add Unified Messaging, SMS notification and expand it to 8 ports to create the most versatile and cost-effective system on the market:

- Up to 500 mailboxes
- 4-ports version (36 hours flash memory capacity)
- 8-ports version (72 hours flash memory capacity)
- Local/Remote administration
- Message Notification from all ports
- SMS notification via optional SMS transmitter unit
- Unified messaging via an optional module
- 19-inch case rack size
- Software Download, Flash-Based EPROM
- LCD displays Line Monitor and Port Status
- [Personal Mailbox management via a network and Windows-based utility program \(PMM\) >>>](#)

## Upgrade your VME Pro and Vocal Pro with our range of Add-On Features

Improve the performance of your **VME Pro** and **Vocal Pro** both inside and outside of the office.

- **GSM SMS Transmitter Unit** connects to let you automatically receive SMS message notification on your mobile phone whenever there is a new voice mail message waiting.



### Expansion Modules

- **VME Pro 4-port (36 Hour Memory)** expansion module lets you double your ports and VME Pro recording capacity. Simply insert an additional 4-port card in the expansion slot and your VME Pro increases from a generous 4-port/36 hours of memory to an impressive 8-port configuration providing a total of 72 hours of recording memory.



- **VME Pro Unified Messaging** expansion module lets you add sophisticated Unified Messaging functionality to your VME Pro. Now you can configure your system to send notifications and recorded Voice Mail messages as E-mail attachments.

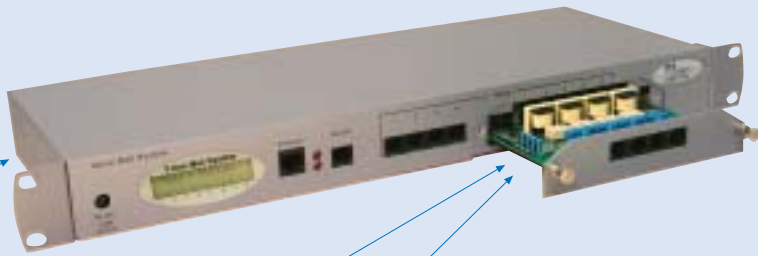


### Vocal Pro

#### The Resourceful Voice Mail Solution

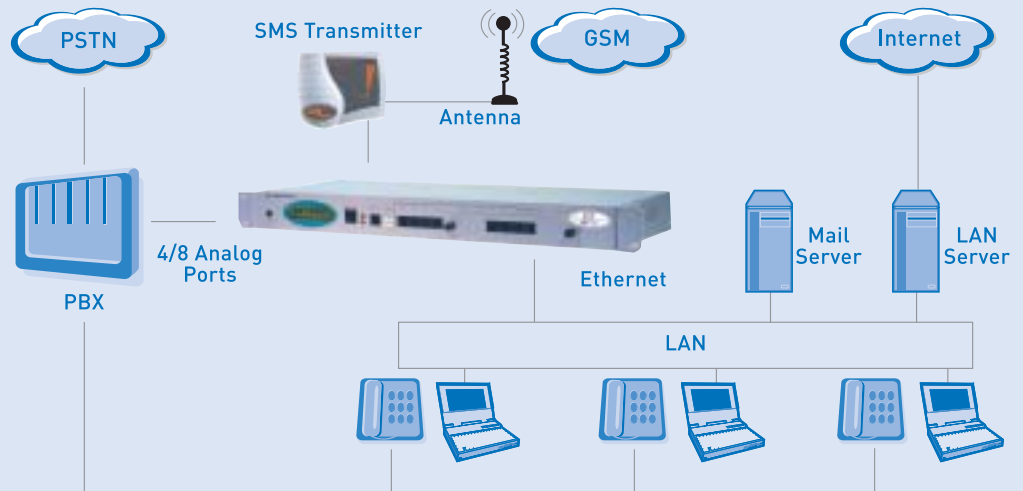
We designed the Vocal Pro for small enterprises needing an entry-level Voice Mail Solution with integrated Unified Messaging functionality. Based on the VME Pro architecture, it offers the following fixed configuration:

- 48 mailboxes
- 2-ports version (18 hours flash memory capacity)
- Local/Remote administration
- Message Notification from all ports
- SMS notification via optional SMS transmitter unit
- Built-in Unified Messaging
- LCD displays System and Port Status
- Local/Remote administration
- 19-inch case rack size
- [Personal Mailbox management via a network and Windows-based utility program \(PMM\) >>>](#)



**VME Pro:** Up to 8 ports with 72 hours of memory together with sophisticated Unified Messaging, providing up to 500 mailboxes!

### VME Pro Architecture



### Vocal The Efficient Voice Mail Solution

We developed the Vocal with a rich collection of Voice Mail features to be the most cost-effective solution for medium-sized and growing enterprises. It offers the following technically advanced configuration:

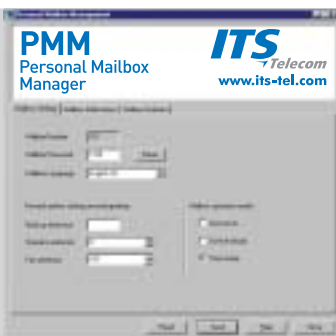
- 128 mailboxes
- 10 hours flash memory capacity
- 2-ports version, upgradeable to 4-ports
- Message Notification
- Line Monitor display



### Vocal Jr. The Most Popular Entry-Level Voice Mail Solution

We are proud to offer the Vocal Jr., which we developed exclusively to meet the demands of companies in the SOHO (Small Office Home Office) arena. The Vocal Jr. is the perfect option for offices with up to 25 employees:

- 48 mailboxes
- 5 hours flash memory capacity
- 2-ports
- Message Notification
- Local/Remote administration



### Personal Mailbox Manager (PMM)

- Select Language the mailbox should use to play system messages
- Setup Transfer Numbers for a backup extension and operator
- Select Fax Extension for your mailbox
- Restrict incoming calls with Do Not Disturb
- Enable Announcer greeting to disable recording of new Voice Mail messages
- Enable Time Stamp to hear when a message was recorded
- Define options for notifying different external numbers that a message has been left
- Display Statistics of how your mailbox is being used

# Voice Mail /Automated Attendant With Unified Messaging

Configuration	VME Pro	Vocal Pro	Vocal	Vocal Jr.
Number of Ports	4-8	2	2-4	2
Storage Capacity	36-72 hours	18 hours	10 hours	5 hours
Number of Mailboxes	500	48	128	48
Built-in Modem	Yes	Yes	No	No
<b>Automated Attendants</b>				
Multilingual Option (Up to 3 Languages)*	Yes	Yes	Yes	Yes
Varied Opening Greetings: Day, Night, Holiday and Break	Yes	Yes	Yes	Yes
Extension Size	2-6 Flexible	2-6 Flexible	2-4 Fixed	2-4 Fixed
Dial a String	Yes	Yes	Yes	Yes
Call Transfer: Supervised, Semi-Supervised, Non-Supervised	Yes	Yes	Yes	Yes
Number of Scripts	98	98	39	39
Maximum Length of opening Greetings	9 minutes	9 minutes	9 minutes	9 minutes
Directory Listing (Dial by Name)	Yes	Yes	Yes	Yes
Fax Detection and Routing	Yes (1-4 faxes)	Yes (1-4 faxes)	Yes (1 fax)	Yes (1 fax)
Greeting by Port	Yes	Yes	Yes	Yes
Basic Audio Text	Yes	Yes	Yes	Yes
Number of Operators	1-8	1-8	1	1
<b>System Administration</b>				
Software Download, Flash-Based EPROM	Yes	Yes	No	No
Built-in Line Monitor	Yes	Yes	Yes	Yes
Port Status Display (LCD)	Yes	Yes	No	No
Statistic Reports: Memory Usage, Traffic, Configurations	Yes	Yes	Yes	Yes
PC Programming (VUP or VUJ*)	Yes	Yes	Yes	Yes
Touch Tone Programming (DTMF)	Yes	Yes	Yes	Yes
Security Passwords: System Administrator, Operator, Mailbox Owner	Yes	Yes	Yes	Yes
System Administrator Password	Yes	Yes	Yes	Yes
In-Band DTMF Integration and Out-band Serial Port RS-232, SMDI Integration	Yes	Yes	Yes	Yes
Setup Wizard	Yes	Yes	Yes	Yes
Disconnect Detection: Current Loop, Busy Tone, Disconnect Tone, Disconnect DTMF Signal	Yes	Yes	Yes	Yes
PBX External Access Code	No	No	1 digit	1 digit
<b>Voice Mail</b>				
Notification from Port(s)	All (Selectable)	All (Selectable)	Port#2	Port#2
Number of Messages per Mailbox	92 (Programmable)	92 (Programmable)	47 (Fixed)	47 (Fixed)
Maximum Message Length (Programmable)	9 minutes	9 minutes	9 minutes	9 minutes
Customized Greeting and Language per Mailbox	Yes	Yes	Yes	Yes
Message Retrieve, Forward, Save, Copy, Delete, Skip	Yes	Yes	Yes	Yes
Date and Time Stamp	Yes	Yes	Yes	Yes
Automatic Message Purge (Deletes old messages)	Yes	Yes	Yes	Yes
Password Protection	Yes	Yes	Yes	Yes
Do Not Disturb Mode	Yes	Yes	Yes	Yes
Message Delivery: Work Extension, Mobile, Home	Yes	Yes	Yes	Yes
Message Notification: Pager, Message Waiting LED, Interrupted Dial Tone	Yes	Yes	Yes	Yes
Unified Messaging Notification and Delivery	Yes (Optional)	Yes	No	No
SMS Notification to a Mobile Phone	Yes (Optional)	Yes (Optional)	No	No
Call Recording (Depends on Capabilities of PBX)	Yes (max. 9 min)	Yes (max. 9 min)	Yes (max. 9 min)	Yes (max. 9 min)
Windows-based Personal Mailbox Manager Utility Program (PMM)	Yes	Yes	No	No

All Voice Mail / Automated Attendant Solutions are multilingual, simultaneously offering up to 3 of the following languages:

Afrikaans, Arabic, Bahasa Indonesia, Bulgarian, Chinese (Mandarin), Czech, Danish, Dutch, English (UK/US), Finnish, Flemish, French (France/Canada), German, Greek, Hebrew, Hindi, Hungarian, Italian, Japanese, Norwegian, Polish, Portuguese, Romanian, Russian, Spanish (Spain/Latin America), Swedish, Thai, Turkish.



**ITS**  
Telecom

29 Hametzuda Street  
Azur 58001, Israel  
Tel +972-3-5576866  
Fax +972-3-5576942  
E-mail:its@its-tel.com  
<http://www.its-tel.com>

## Increasing your business phone system performance

ITS Telecom is a leading provider of the most comprehensive range of top-quality peripheral solutions for business telecommunication systems on the world market. We are constantly developing innovative, feature-rich and cost effective products that promote your company's image and streamline needless expenses. Dedicated to improving the performance of small, medium and large organizations, ITS is a one-stop-shop for all your current and future business phone system needs.