

# myFAX

Network Fax Server

## Easy Setup Plug N Fax



The myFAX network fax server was designed to meet the needs of small to mid-sized businesses or workgroups. myFAX network fax server comes with all the necessary hardware and software to allow network users to send and receive faxes from the desktop or browser.

It is a turnkey solution that connects to PSTN fax lines. myFAX network fax server converts faxes to TIFF files allowing you to receive faxes wherever you are, as e-mails or desktop and send faxes from any application that can print. The system , provides distributed faxing capabilities, over a WAN, from a corporate office to small remote offices as well as to field sales people. In addition, it provides secure convenient faxing for LAN users offering a high degree of privacy for both the sender and recipient. myFAX provides both software and web management interface.

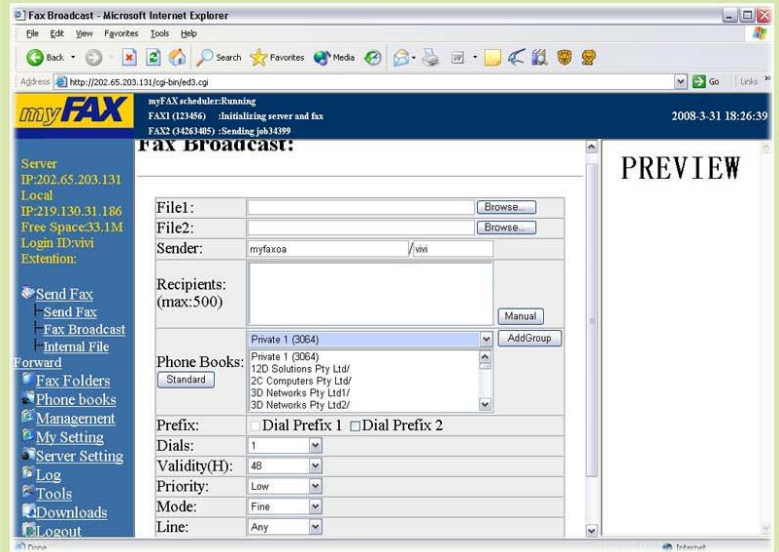
# myFAX Function:



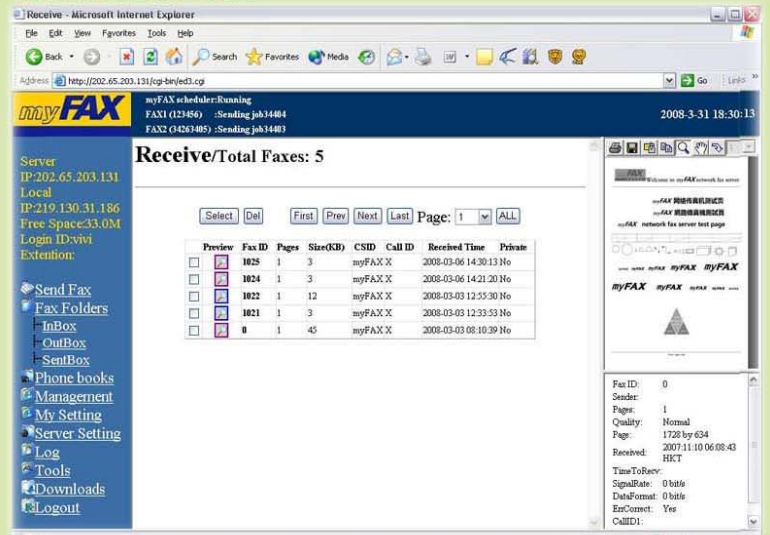
## Send and Receive Fax

- Automatic Format Conversion**  
 The user can send fax by select myFAX printer to convert the current document to fax format.
- Fax Queue**  
 All faxes will be queued within myFAX fax queue. It have priority code to indicate the priority of the fax. Urgent fax will send out by next available line.
- Delay Fax Sent**  
 Users can send faxes by specified time.
- Fax Broadcast**  
 Users may also be able to send the fax document to a number of different users. Fax Broadcast result can export to Excel format.
- Fax Resend**  
 When the fax destination is busy or no answer, myFAX will queue for resend. users can set up the retry times in the software.
- Inbound Fax Routing**  
 myFAX will route the fax according to sender's input of the fax mailbox number and automatically route to users mailbox. If the sender did not enter fax mailbox number, it will automatically sent to the fax administrator for manual routing. Administrator can also apply the CSID and line routing for fax delivery.
- Internal Transfer**  
 All faxes can be transfer internally. Just select the user's name on the list.
- Fax Status**  
 The system automatically indicate real time fax status on top of web interface. It helps user to identify the fax line situation.
- Fax to Email**  
 All received fax will be automatically send to user's folder. It also can setup to send to email account by attachment with tiff or pdf format.
- Email to Fax**  
 User can send fax from anywhere with internet connection. Just add the attachment to email and our fax server will automatically converts your email into fax and forwards it to the destination fax machine.

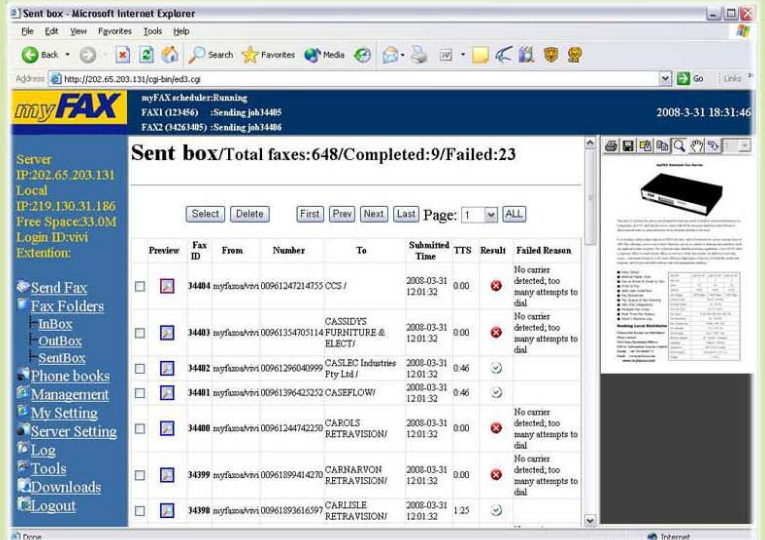
## SendFax:



## ReceivedBox:



## SendBox:



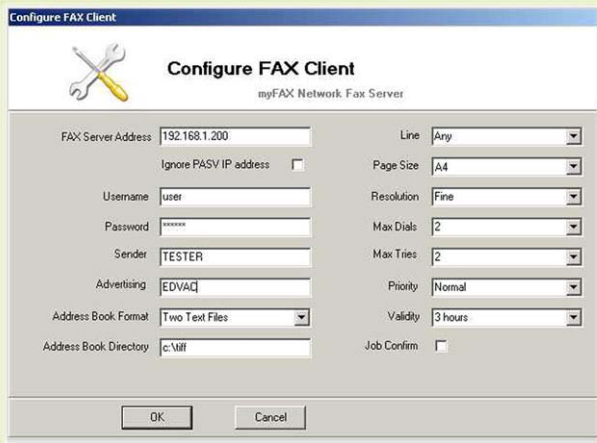
# myFAX Function:



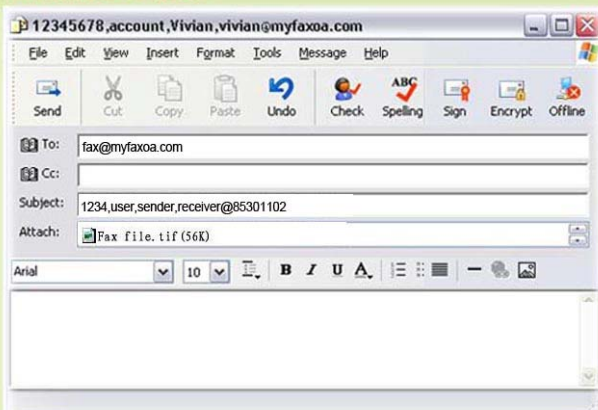
## Print2FAX:

Print2fax is a Windows print monitor designed to send its output directly to a myFAX Server. Once installed, you can print to a myFAX Server from any application, and it will pop up a simple dialog box, allowing you to enter the destination FAX number. It's a easy way to send FAXes from any Windows application.

## Print2FAX Interface:



## Email2FAX:



## System and Management

### User Management

Administrators can set up different user accounts passwords, management authority, attributes ,lines ,document format and email address.

### Address Book

myFAX has its own address books – both shared and private to each user. Contacts may be grouped together into fax lists for rapid dissemination of information using just a few clicks.

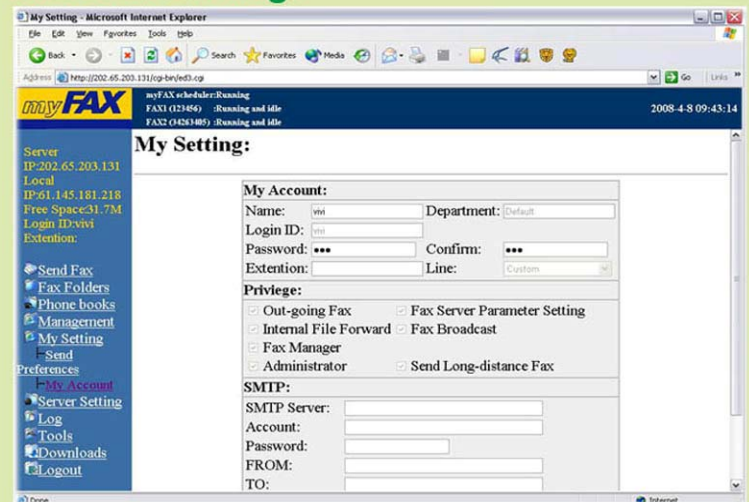
### Fax Monitoring

Administrators can monitor all incoming or outgoing faxes.

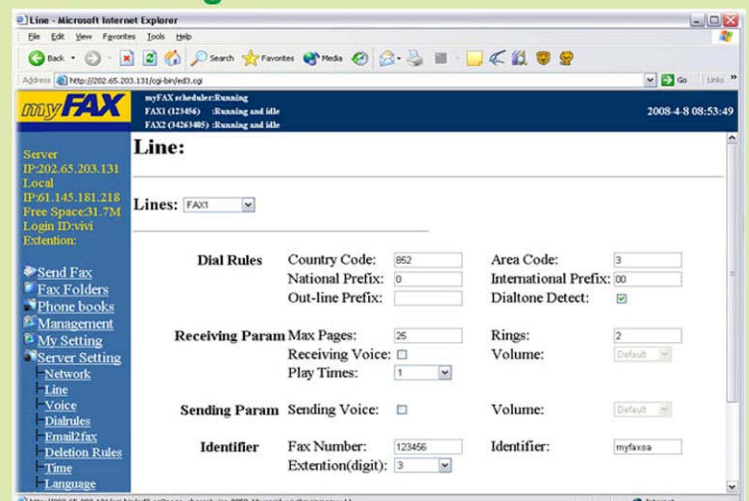
### System Log

myFAX provides varies system log for administrator. Included user login and modify log, fax sent log, received fax log, fax distribution log and internal transmit log. All logs can export to excel format.

## Account Setting:



## Line Setting:



## Main Feature

- Easy Setup**  
 myFAX network fax server is intergrated in a box. No technical skill is requird to setup the server.
- Desktop Faxing**  
 myFAX network fax server allows you to deploy faxing to your entire user base so that they can send and receive faxes while sitting at their desks.
- Operate Independently**  
 System running completely out of the computer. No server side software required. Fax stored in myFAX network fax server.
- PBX Integration**  
 myFAX can install behind PBX and able to listen DTMF code generated from PBX system. So fax can be deliver upon PBX setting or analog DID/DDI service.
- Network Fax Sharing**  
 myFax run in TCP/IP network. User can share faxes and files within local LAN or even internet. It save time to deliver fax and save cost as well.
- CSID Support**  
 User can identify the source of fax. It help to manage faxes more intuitive and more convenient
- Multi-line Support**  
 Equipment models with variety of selection help adapt to different types of customers. myFAX150 support 1 external fax line. myFAX250 support 2 external fax lines. myFAX450 support 4 external fax lines. Multi line model can send fax concurrently.
- Lightning Proof**  
 Lightning proof componet have been installed within the myFAX. It help to minimize the failture cause by lightning.

## Product Specifications:

MODEL	myFAX150	myFAX250	myFAX450
Fax Line	1	2	4
Max. User	20	50	100
Memory	128M	256M	512M
Fax Storage	2000pages	4000pages	8000pages
Network Protocol	TCP/IP		
Network Interface	RJ45		
Network Speed	10/100M		
Fax Line Interface	RJ11		
Fax Line Type	PSTN		
Fax Speed	14.4K / 12K / 9.6K / 7.2K / 4.8K / 2.4K		
Fax Resolution	98 / 196DPI		
Fax Compression	MMR,MR,MH		
Fax Standard	ITU-T G3 / G4		
Fax Routing	Line / CSID / DTMF		
DID/DDI Digit	(User Define 1,2,3,4,5)		
OS Support	MS Windows / Mac / Linux		
Browser Support	IE / Firefox / Netscape		
Language	English ,Chinese		
Remote Access	Support		
Document Format	Tiff / PDF		
Rack Mount	No	Yes	
Dimension	280X150X45mm		
Power Supply	External 12V DC,1A		
Weight	1.5kg		
Approval	CE ,FCC		

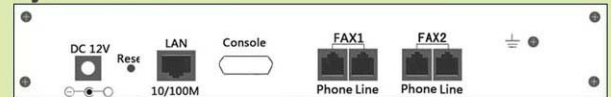
## Sent Log:

FaxID	Sender	Recipient	Number	CSID	Line	Pages	Speed	Format	Quality	Submitted Time	Sent Time	TTS	Result	Failed Reason
38525	myfams@vivi	EDVAC@vivi	0098676983301102	myFAX	FA:2	1	14400	3-D	MMR	2008-04-08 16:34:44	2008-04-08 16:36:06	0:40	Completed	
38524	myfams@Philip Chan	powerFAX	009886227951079	powerFAX	FA:X1	1	14400	3-D	MMR	2008-04-08 12:24:01	2008-04-08 12:24:57	0:19	Completed	
38523	myfams@Philip Chan	setriscom@f	00916044336920	604 433 6920	FA:2	1	14400	3-D	MMR	2008-04-07 21:44:46	2008-04-07 21:44:46	0:43	Completed	
38522	myfams@Philip Chan	setriscom@f	00914032281329	4032281329	FA:X1	1	14400	3-D	MMR	2008-04-07 21:44:46	2008-04-07 21:44:46	0:37	Completed	
38521	myfams@Philip Chan	setriscom@f	00917804810090		FA:2	1	14400	3-D	MMR	2008-04-07 21:44:46	2008-04-07 21:44:46	0:42	Completed	
38520	myfams@Philip Chan	setriscom@f	00915196530246	5196530246	FA:X1	1	14400	3-D	MMR	2008-04-07 21:44:46	2008-04-07 21:44:46	0:37	Completed	
38519	myfams@Philip Chan	setriscom@f	00919054755981		FA:2	1	14400	3-D	MMR	2008-04-07 21:44:46	2008-04-07 21:44:46	0:39	Completed	

### myFAX150 BackPanel:



### myFAX250 BackPanel:



### myFAX450 BackPanel:

