

# Fax Server IP

Fax is an indispensable tool in business communication. Fax transmission has become the norm, especially for the most important correspondence. The security of fax traffic and the ease with which documents are transmitted mean that no business can do without it.

## Network faxing: a complete system

In today's workplace, Local Area Networks are commonplace. It is therefore logical to use the network for fax traffic too. The Fax Server IP makes network-based faxing easy. Based largely upon internet technology, it overcomes many of the complications which can afflict the implementation of a network application. This way set-up costs are kept to a minimum. The Fax Server IP is a comprehensive solution providing hot pluggable network appliance fax hardware, user level printing and management software. It fulfils all the functions a fax system requires, including:

- Reception, distribution and printing. All fully integrated with e-mail.
- Conversion of print commands to fax transmission and feedback reports by e-mail if required.
- Archiving of fax traffic on the server, with comprehensive search options.

## Incoming fax traffic

The Fax Server IP directs incoming faxes to a local or internet e-mail address. This way all incoming faxes are received by the person assigned to handle inbound correspondence. Separate faxes can then be forwarded to the appropriate person or department as attachments with e-mail messages. This avoids creating two separate workflows, which would be the case if e-mail and hard-copy faxes were dealt with separately. The distribution of faxes inside and outside the organisation is automatic, fast and efficient.



Now mobile staff and home workers can receive their faxes on time.

If your organisation has more than one fax number, each can be linked to a separate e-mail address so that incoming faxes are routed directly to the right person or department. (For this option to work, your telephone system must support this function.)

## Outgoing fax traffic

Faxing can be done from any workstation on the network. Outgoing faxes are created using the standard Windows metaphor of printing to the fax-printer. This can be done with any PC application, be it a word processor, spreadsheet program or any other type of software. The advantage of this is that the output from virtually any application can be faxed. The fax print command opens the address book from which you can then select the destination that you want to send the fax to. The user can request a confirmation of successful fax transmission through e-mail.

All relevant information about the fax, such as the used application, document name, comments and recipient, are permanently stored together with the fax in the fax archive database. Because the Fax Server IP uses internet protocols for communication, the printing and sending of faxes is compatible with both the internet and local networks. This means that both local users as well as mobile users on remote networks can send and receive faxes and reports through the Fax Server IP.

The standard address book in Microsoft Windows, which can be shared with other applications such as Microsoft Outlook, is often used to send faxes. However, the Fax Server IP also has its own separate address book.

## Archiving guarantees no loss of information

A unique advantage of the Fax Server IP is that all fax traffic is archived. The storage capacity of the server is equivalent to approximately 250,000 pages. Every fax that has been send or



received through the Fax Server IP remains stored in the database and is accessible only for authorised users. Therefore the archive provides the essential functions of allowing permanent access to vital information and at the same time securing it as well. This is an important feature because the tendency is for the most important documents to be transmitted by fax. Questions like "When did we fax that order and was it received?" can now be answered instantly because all faxes are stored including all the relevant information of the fax.

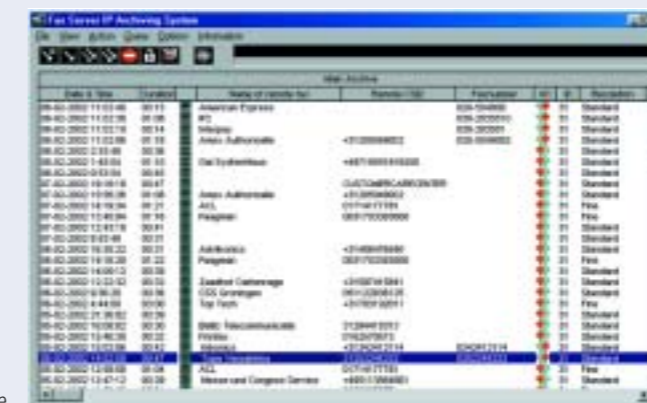
Client fax software supplied includes the Fax Server IP Archiving System. This software manages access to the fax archive, performs searches and operates as an on-screen fax browser. It also provides additional options, such as the creation of a fax archive on CD-ROM or DVD to enable the storage of fax records for many years. The client software is suitable for LAN and internet use.

## Operating details

The Fax Server IP uses standard PC internet protocols such as TCP/IP and FTP. The standard e-mail SMTP protocol is used to post received faxes to mail server software. This approach means that there is no need to install software or allocate space on local or file server hard drives to send and receive faxes. Instead, the hard drive built into the Fax Server IP is used for storage. Only standard messaging and internet protocols available on all computers running Windows are used to route messages and information between the Fax Server IP, the mail server and individual PCs.

## Extremely reliable

The Fax Server IP is a stand-alone fax solution. All fax communication software is located on the Fax Server IP hardware itself and all the faxes are stored in there. In contrast with traditional fax modems, the PC does not play a part in the reception or transmission of faxes and fax traffic is unaffected by network failures or PCs being switched off. This is a unique advantage, which distinguishes the Fax Server IP



fax archive database

Technical specifications	
Product numbers	
Art. 1470	10Gb – capacity approximately 250,000 pages
Art. 1472	20Gb – capacity approximately 500,000 pages
Power supply	
	7.5 Volts AC; 2A max./0.55A nom. using adapter
Operating conditions	
Temperature	0-40° Celsius
Humidity	10-90%
Connections	
<b>Connector type</b>	
RS232 serial,	9-pin female MiniDIN
max. 115,200bps	
10-BASE-T ethernet	RJ45 UTP
Telephone line in	RJ11
Telephone line out	RJ11
Power supply	Special
Modulation standard	
	<b>bits/sec</b>
V.17	14400/12000/9600/7200
V.29	9600/7200/4800
V.27 ter	4800/2400
Compression method	Modified Huffman 1D/2D
Dimensions (L/B/H)	22.5cm/18cm/8cm
Weight	1 kilogram
Technical standards	
EU telecommunications	CTR21
EU safety	EN50081 part 1, EN50082 part 1
EU emissions	CE
Operating systems	
Printer drivers	Microsoft Windows 95/98/ME/NT4.0/2000/XP
Fax Server IP Archiving System client	Microsoft Windows 95/98/ME/NT4.0/2000/XP
Accessories supplied	
	Power adapter Telephone cables: 2 x RJ11, 3 metres English-language instruction manual Software on CD-ROM

from other network fax products. Your company's fax capability is never interrupted, thanks to this approach. And, of course, you eliminate the drawbacks of ordinary fax machines which can easily run out of paper.

#### Software included

The following software is supplied with the Fax Server IP:

- The printer driver, which converts print jobs to faxes and provides an interface to the phone book.



- The archive client Fax Server IP Archiving System, which provides access to the fax archive.

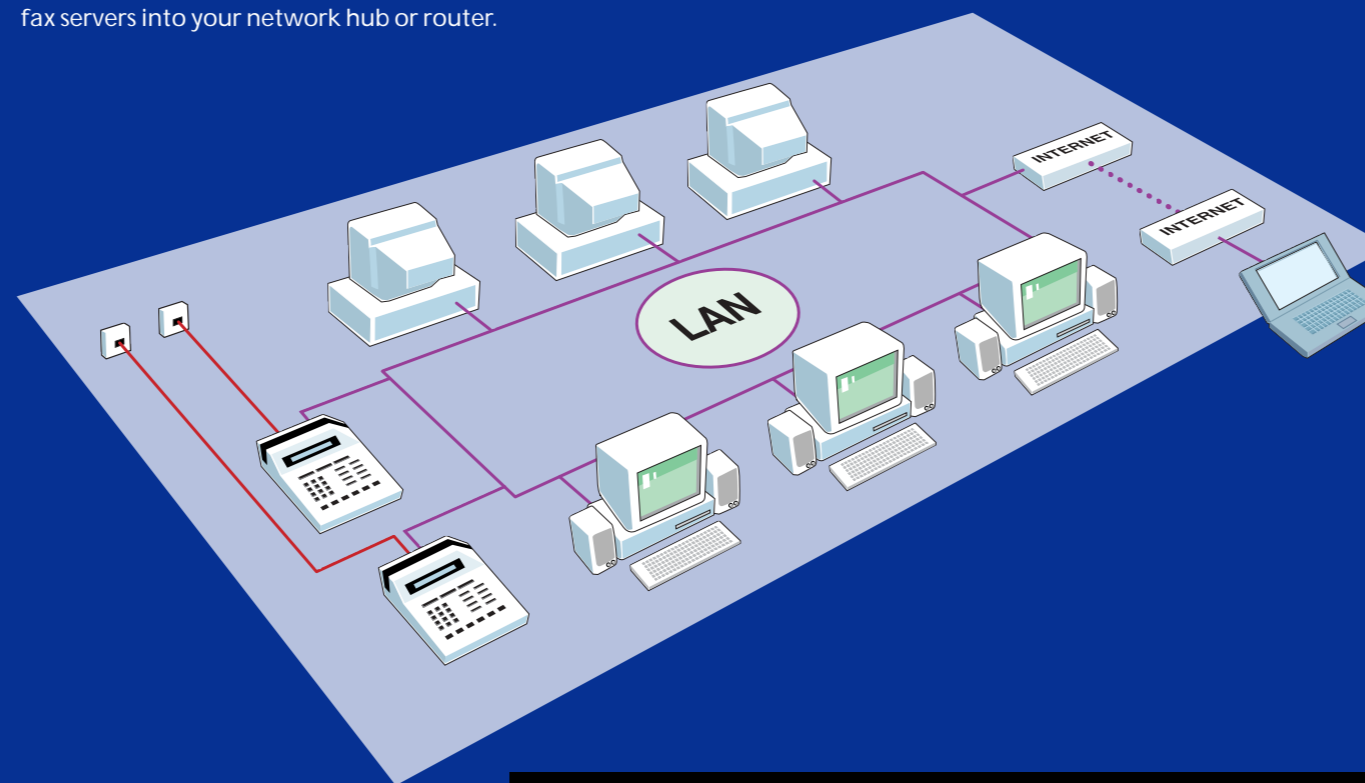
This software is compatible with PCs running Microsoft Windows 95, 98, ME, NT 4, 2000 and XP. Because the software cannot be used independently of the Fax Server IP hardware, there are no installation licence fees. Every workstation may use the software and gain full fax capability at a very low cost per seat.

#### Unlimited number of lines

Many businesses have more fax traffic than one telephone line can handle. To address this requirement, the Fax Server IP system is fully scaleable. The client software supports an unlimited number of fax servers. Since the software automatically manages operation with multiple fax lines, usage does not change based on the number of fax lines. Fax lines can be added simply by plugging additional fax servers into your network hub or router.



- 1 7.5 volt power in
- 2 Standard RS232 port
- 3 TCP/IP ethernet port for connection to PC, network or router
- 4 Telephone line in/out



# Fax Server IP

Complete system for business fax traffic



A product of Vidicode Datacommunicatie BV



**Vidicode Datacommunicatie BV**  
tel.: +31(0)79 3617181  
www.vidicode.nl

fax: +31(0)79 3618092  
vidicode@vidicode.nl

Incoming and outgoing faxes at every workstation  
Works with LAN or internet  
Connects fax and e-mail